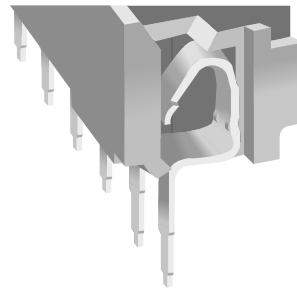


# 200C Series *Stamped Single Beam Contact Closed Bottom DIP Sockets*

A




216-AG19DC



## FEATURES:

The Thomas & Betts 200C Series single beam side wipe contact provides maximum normal force and consistent mechanical performance in Thomas & Betts's lowest cost socket.

- Non-wicking, closed bottom design gives protection against flux and solder contamination
- Protected open entry for easy insertion of IC's by hand or by automatic insertion
- Anti-overstress design protects contacts, helps eliminate damage from oversize leads and maintains consistent normal force
- High normal force results in gas tight connections
-  Recognized under the Component Program of Underwriters Laboratories, Inc. File No. E111362

## APPLICATION DIMENSIONS:

- PWB Thickness Range: Standard .062" and .092" (1,57 and 2,34)
- PWB Hole Size Range: .055" ± .002" (1,40 ± 0,05)
- IC Pin Dimension Range: .008" x .015" ( 0,20 x 0,38) through .015" x .023" (0,38 x 0,58), .115" (2,92) min. length

## MATERIAL SPECIFICATIONS:

Insulator ..... Thermoplastic polyester, UL rated 94V-0  
Contacts ..... Phosphor bronze or beryllium copper  
Plating ..... Tin/lead

## PERFORMANCE SPECIFICATIONS:

### MECHANICAL

Vibration ..... Passed MIL-STD-1344, Method 2005.1,  
Condition III, 15 G's  
Shock ..... Passed MIL-STD-1344, Method 2004.1,  
Condition G, 100 G's  
Durability ..... Passed MIL-STD-1344, Method 2016, 50 cycles  
Normal Force ..... 170 Grams (6.0 oz.) with .009" x .015"  
(0,23 x 0,38) IC lead typ.  
Contact Retention ..... 340 Grams (12.0 oz.) minimum  
Solderability ..... Passed MIL-STD-202, Method 208  
Insertion Force ..... 169 Grams (6.0 oz.) average with a .013" x .020"  
(0,33 x 0,51) dia. polished steel pin  
Withdrawal Force ..... 43 Grams (1.5 oz.) average with a .009" x .015"  
(0,23 x 0,38) dia. polished steel pin

### ELECTRICAL

Contact Resistance ..... 10 Milliohms  
Contact Rating ..... 2 Amps  
Capacitance ..... .5 pF per MIL-STD-202, Method 305  
(Adjacent contacts max.)  
Insulation Resistance .... 2 x 10<sup>6</sup> Megohms per MIL-STD-1344,  
Method 3003.1  
Dielectric Withstanding  
Voltage ..... 1,000 Volts RMS per MIL-STD-1344,  
Method 3001

### ENVIRONMENTAL

Humidity ..... Passed MIL-STD-1344, Method 1002.2  
Thermal Shock ..... Passed MIL-STD-1344, Method 1003.1  
Temperature Cycling .... Passed MIL-STD-1344, Method 1003.1  
Operation Temperature .. Gold -55°C to +125°C  
Tin -55°C to +105°C  
Salt Spray ..... Passed MIL-STD-1344, Method 1001.1

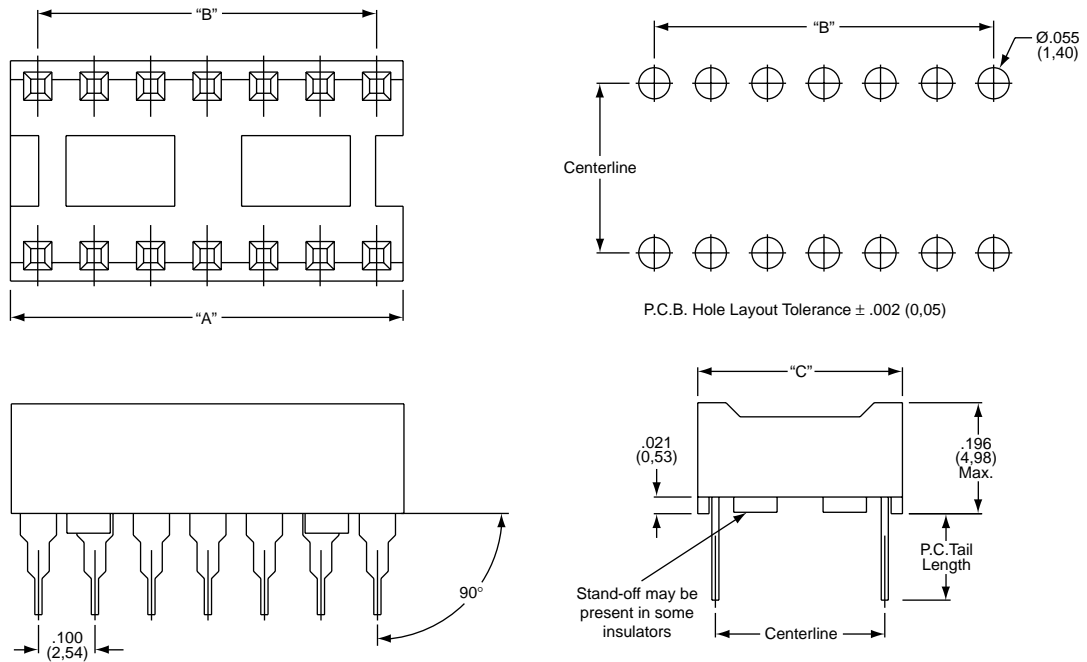
**Thomas & Betts**

Quality & Innovation From **AUGAT**® Name Brand Products

A4

Thomas & Betts  
1555 Lynnfield Road  
Memphis, TN 38119  
(901) 682-8221 FAX (901) 537-8805

# Stamped Single Beam Contact Closed Bottom DIP Sockets 200C Series



## STANDARD CONFIGURATIONS

Number of Contacts	A	B	C	Number of Contacts	A	B	C
8	.400 (10,16)	.300 (7,62)	.400 (10,16)	24	1.200 (30,48)	1.100 (27,94)	.700 (17,78)
14	.700 (17,78)	.600 (15,24)		28	1.400 (35,56)	1.300 (33,02)	.400 (10,16)
16	.800 (20,32)	.700 (17,78)		28	1.400 (35,56)	1.300 (33,02)	.700 (17,78)
18	.900 (22,86)	.800 (20,32)		32	1.600 (40,64)	1.500 (38,10)	
20	1.000 (25,40)	.900 (22,86)		40	2.000 (50,80)	1.900 (48,26)	
22	1.100 (27,94)	1.000 (25,40)		42	2.100 (53,34)	2.000 (50,80)	.700 (17,78)
24	1.200 (30,48)	1.100 (27,94)		48	2.400 (60,96)	2.300 (58,42)	

## PART NUMBERS

Part Number	Position	Centerline	Contact Material	Part Number	Position	Centerline	Contact Material
208-AG19DC	8	.300	Phos. Bronze	224-AG19DC	24	.600	Phos. Bronze
208-AG39DC	8	(7,62)	Beryllium Copper	224-AG39DC	24	(15,24)	Beryllium Copper
214-AG19DC	14	.300	Phos. Bronze	228-AG10DC	28	.300	Phos. Bronze
214-AG39DC	14	(7,62)	Beryllium Copper	228-AG30DC	28	(7,62)	Beryllium Copper
216-AG19DC	16	.300	Phos. Bronze	228-AG19DC	28	.600	Phos. Bronze
216-AG39DC	16	(7,62)	Beryllium Copper	228-AG39DC	28	(15,24)	Beryllium Copper
218-AG19DC	18	.300	Phos. Bronze	232-AG19DC	32	.600	Phos. Bronze
218-AG39DC	18	(7,62)	Beryllium Copper	232-AG39DC	32	(15,24)	Beryllium Copper
220-AG19DC	20	.300	Phos. Bronze	236-AG19DC	36	.600	Phos. Bronze
220-AG39DC	20	(7,62)	Beryllium Copper	236-AG39DC	36	(15,24)	Beryllium Copper
222-AG10DC	22	.300	Phos. Bronze	242-AG10DC	42	.600	Phos. Bronze
222-AG30DC	22	(7,62)	Beryllium Copper	242-AG30DC	42	(15,24)	Beryllium Copper
224-AG10DC	24	.300	Phos. Bronze	248-AG10DC	48	.600	Phos. Bronze
224-AG30DC	24	(7,62)	Beryllium Copper	248-AG30DC	48	(15,24)	Beryllium Copper

Note: Part Numbers in this chart refer to a .125" PC Tail Pin

### Need more technical information?

Consult your Thomas & Betts sales office listed on the back cover